

# Teagown

VERSION 1.0

Last updated 18 January 2024

REPATTERNING  
THE DRESS  
COLLECTION  
AT AGNES

# PATTERNS For All BODIES



Pattern by Carolyn Dowdell,  
with dressmaker notes by Jessica Dykins  
Commissioned by Agnes Etherington Art Centre as  
part of the pilot project *Patterns for All Bodies*

DIGITAL  
**AGNES**

**BADER**  
PHILANTHROPIES  
CELEBRATING COMPASSION

# Teagown

VERSION 1.0

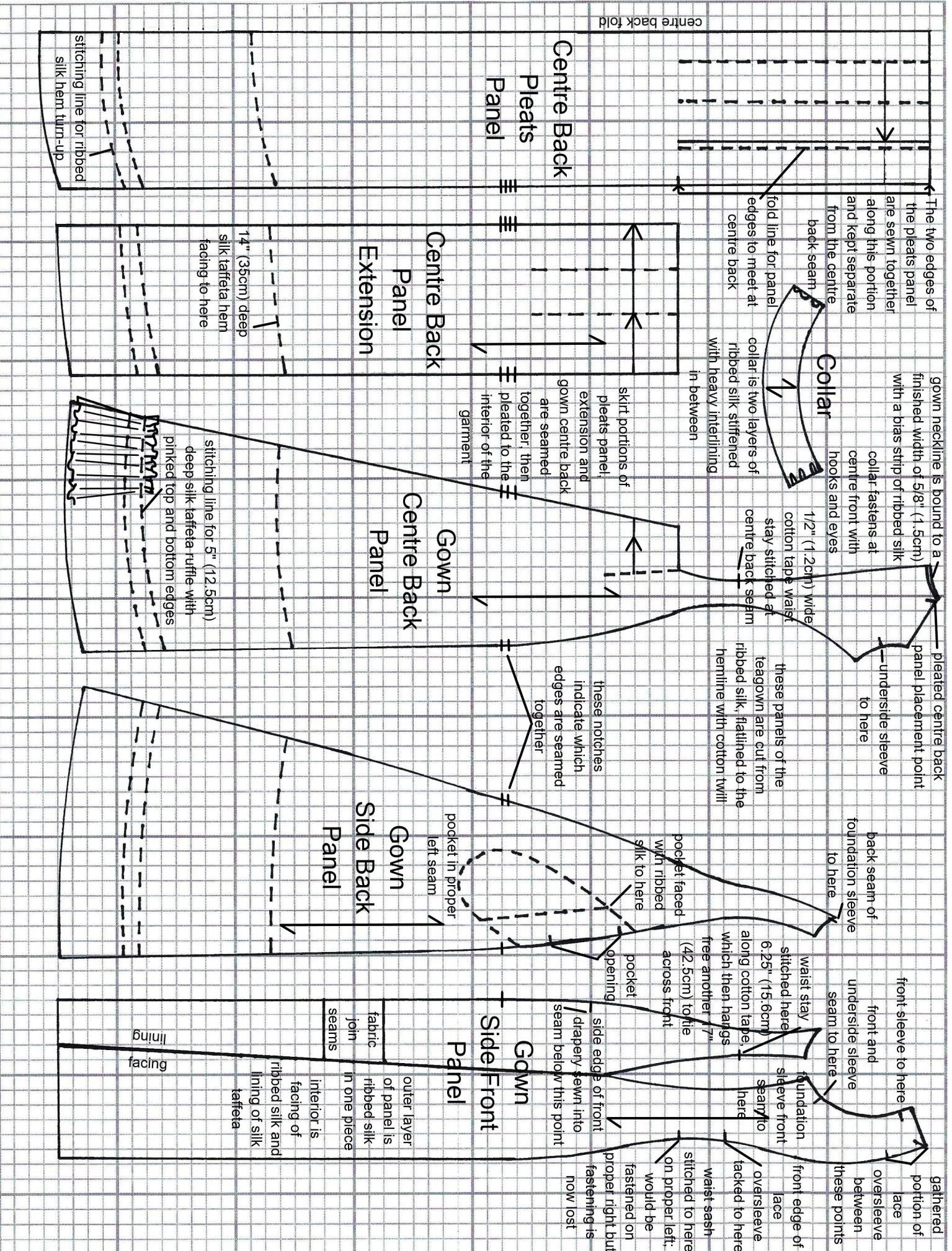
Last updated 18 January 2024



**Teagown**, Europe or North America, c. 1893-1900, silk faille, silk taffeta, silk lace, striped silk broadcloth, glazed cotton and twill cotton. Agnes Etherington Art Centre. Gift of Harriette Folger McGinnis, 1951 (C51-477.7)

More information about the *Teagown* can be found in the *Patterns for All Bodies* online exhibition available on Digital Agnes: [agnes.queensu.ca/digital-agnes/online-exhibition/patterns-for-all-bodies/](https://agnes.queensu.ca/digital-agnes/online-exhibition/patterns-for-all-bodies/)





The two edges of the pleats panel are sewn together along this portion and kept separate from the centre back seam

fold line for panel edges to meet at centre back

### Collar

collar is two layers of ribbed silk stiffened with heavy interfacing in between

gown neckline is bound to a finished width of 5/8" (1.5cm) with a bias strip of ribbed silk

1/2" (1.2cm) wide cotton tape waist stay stitched at centre back seam

skirt portions of pleats panel extension and gown centre back are seamed together, then pleated to the interior of the garment

pleated centre back panel placement point

underside sleeve to here

these panels of the teagown are cut from ribbed silk, flatlined to the hemline with cotton twill

back seam of foundation sleeve to here

pocket faced with ribbed silk to here

front sleeve to here

waist stay stitched here 6.25" (15.6cm) along cotton tape, which then hangs free another 7" (42.5cm) to lie across front

gathered portion of face

underside sleeve seam to here

side edge of front drapery sewn into seam below this point

### Side Front Panel

outer layer of panel is ribbed silk in one piece

interior is facing of ribbed silk and lining of silk taffeta

front edge of face

oversleeve tucked to here

waist sash stitched to here on proper left, would be fastened on proper right but fastening is now lost

### Centre Back Pleats Panel

stitching line for ribbed silk hem turn-up

### Centre Back Extension Panel

1 1/4" (3.5cm) deep silk taffeta hem facing to here

### Gown Centre Back Panel

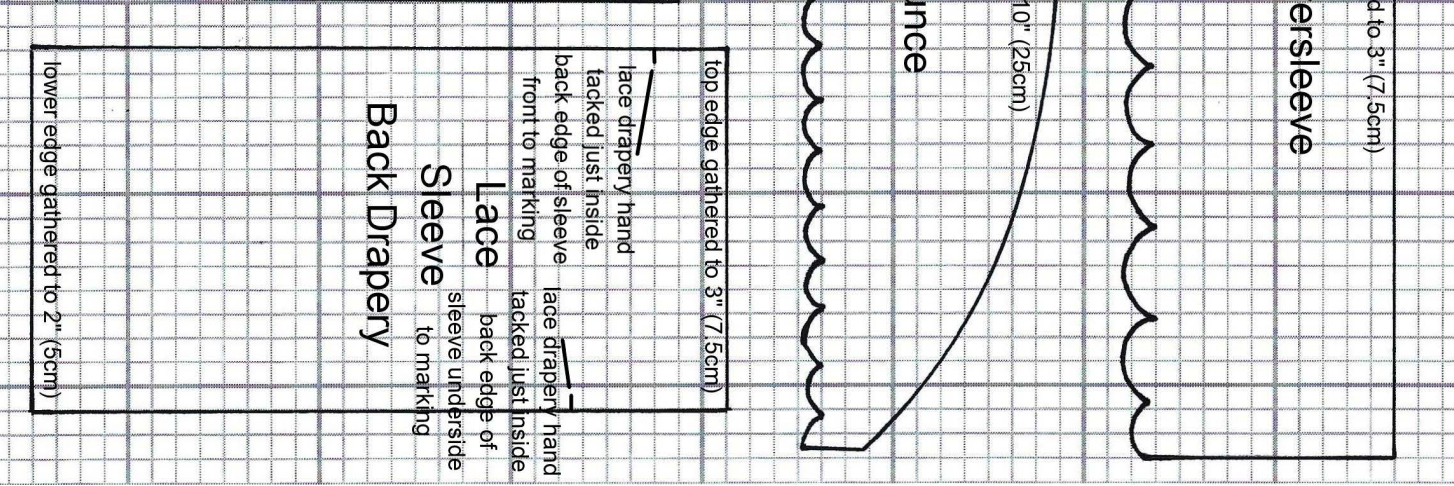
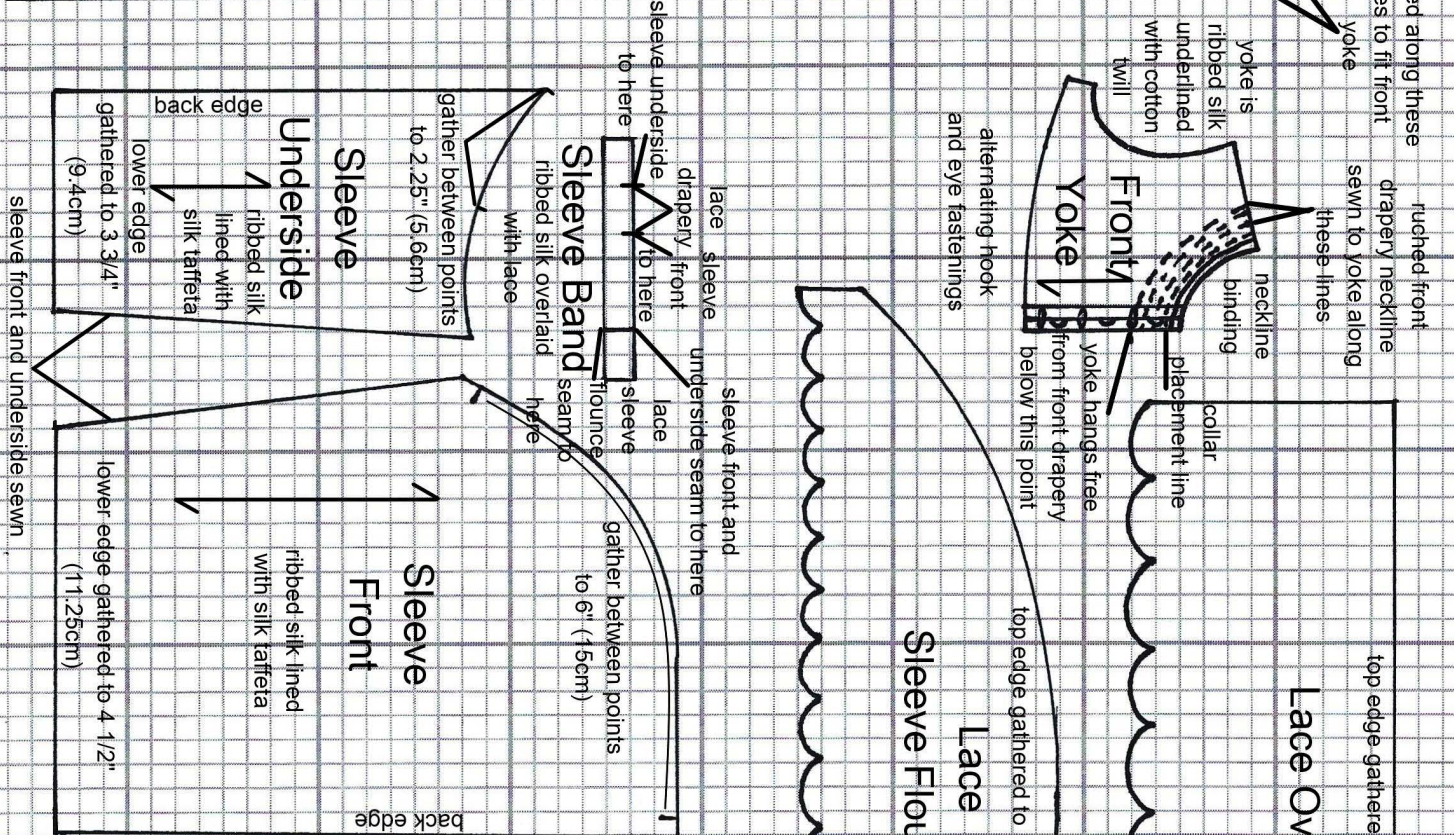
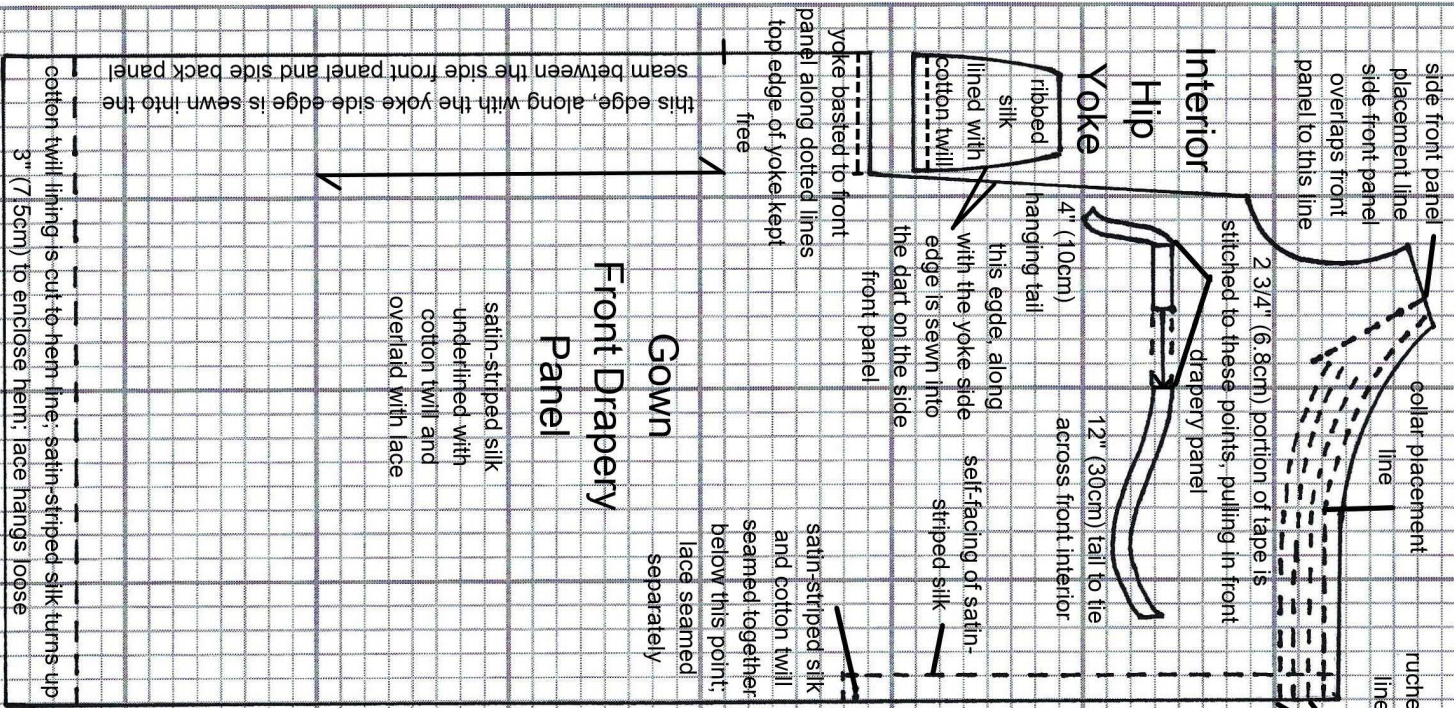
stitching line for 5" (12.5cm) deep silk taffeta ruffle with pinked top and bottom edges

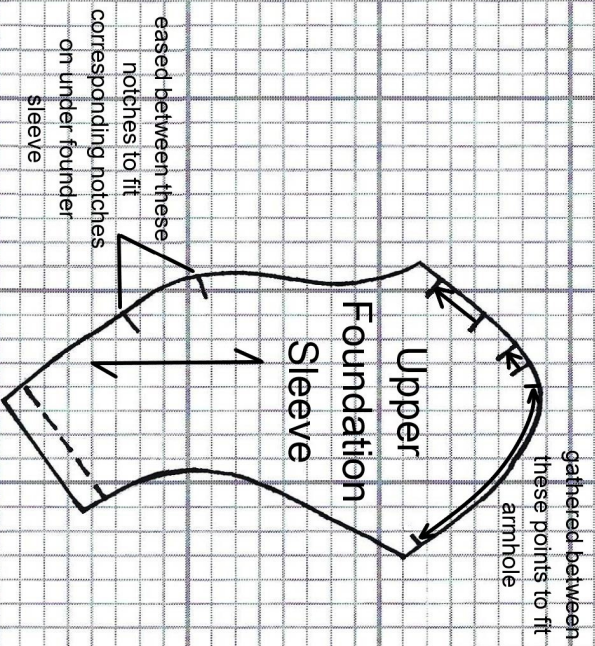
### Side Gown Panel

pocket in proper left seam

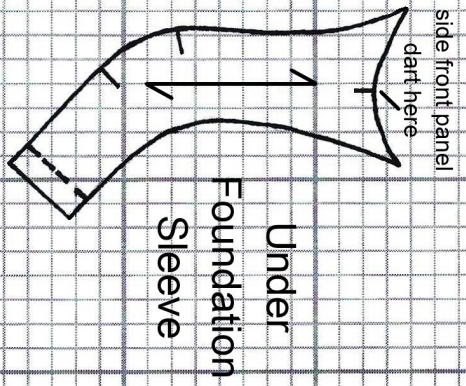
lining facing

centre back fold

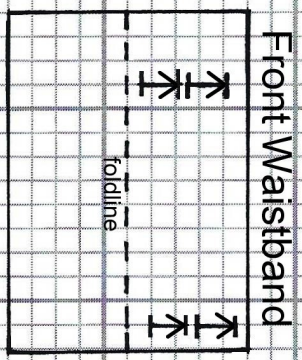




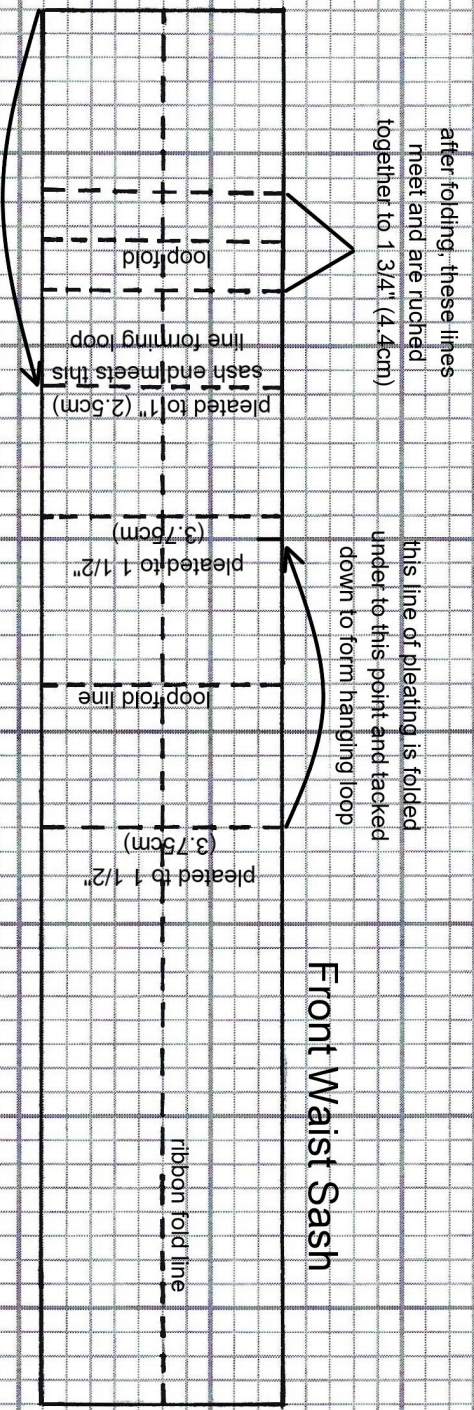
eased between these notches to fit corresponding notches on under founder sleeve



front waistband and sash are made from 10" (25cm) wide silk moire ribbon, folded in half lengthwise with edges whipstitched together



waistsband ribbon is folded and then pleated as indicated



after folding, these lines meet and are ruched together to 1 3/4" (4.4cm)

this line of pleating is folded under to this point and tacked down to form hanging loop

## PATTERNMAKER NOTES

### Enlarging the Pattern

The pattern is drafted to 1/8 scale: each square on the grid represents 1" of the full-size garment. This means that the pattern will need to be enlarged 8 times, or 800%, in order to get it to full size. There are several ways to enlarge scaled patterns. Three possible methods are given here.

Note that **no seam or hem allowances are included**. These will need to be added after enlarging and (likely) altering the pattern pieces if you wish to make them up.

Also note that the grain of the fabric corresponds to the vertical lines of the pattern grid.

#### Copy Shop

This is probably the easiest method, although it does incur some cost. If you have a local copy shop or office supply store with copying services, you can take the patterns there and have them enlarged by 800% to make full-sized copies on large format paper. However, this will cause some distortion because all of the lines will also be enlarged by 800%, which can make them less clear and crisp.

#### Home Computer

If you have image-handling software on your computer (such as Microsoft Paint), you can scale up the pattern to print out at home. Instructions for using specifically Paint are given here. Note that the same issue with enlargement distortion may apply here as it does to the copy shop option.

#### STEP 1

Download and save the pattern pages/images as a .jpg or other similar file that can be opened in Microsoft Paint.

#### STEP 2

Open your photo in Microsoft Paint and click on the resize tool. For the percentage, enter in 800. This will resize your image to what's needed for the full-sized pattern.

#### STEP 3

Go to "Page Setup" under the Print tab to make sure your page prints at the new scale you've sized. Under the "Scaling" option, click on "Fit to" instead of "Adjust to." This should change it to the page layout it needs without resizing your image. You may also wish to click on Horizontal and Vertical centering to make the page taping easier later. The number should likely read higher than 1 x 1 pages—if not, you might want to click on "Adjust to" then back to "Fit to" to sort of reset the setting.

#### STEP 4

Once your setup is complete, print the pages. Make sure all other print dialog boxes state that the pattern will be printed at the full 100% scale to ensure it does not print smaller or larger than you need it.

#### STEP 5

When all the pattern sheets are printed, begin assembling them in a grid by lining up the edges and taping them in place. Note that you will have to overlap the margins you set in the page setup back in step 3.

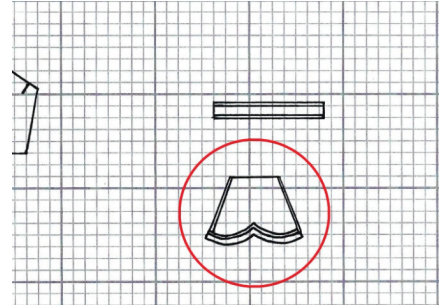
One thing to note with this method and the copy shop option is that the lines of the pattern pieces will get 8x thicker and therefore lose some of their sharpness. With the Microsoft Paint option, the pixels may also get a little blurry.

#### Enlarging by Hand with a Grid

For this method you will need 1" (2.5cm) grid paper. You can either draw this out yourself on a large roll of craft paper or similar or buy a roll of 1" grid paper at least 24" (60cm) wide.

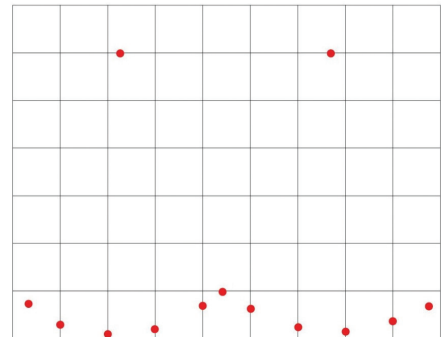
#### STEP 1

Pick a square on one side of the scaled down pattern. Choose a corresponding larger square on the paper. Note where the pattern lines enter or cross the original pattern square and mark those locations on the larger square.



#### STEP 2

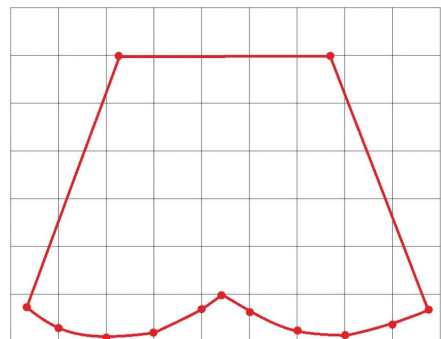
Connect the dots and draw exactly what you see in the original square onto the larger square.



#### STEP 3

Transfer all the markings from the original pattern.

A tip to make things easier and faster with this method: Many of the pattern pieces comprise or include straight lines. In these instances, simply transfer the start and end points of those lines to the corresponding locations on the larger paper and use a straight ruler to connect.



## DRESSMAKER NOTES

### Adjusting the Pattern

We have gathered the following references to help you master the art of pattern adjustment whether you are a beginner or an advanced sewist. Each garment will require customized techniques to give you the best fit. These resources will guide you on your sewing journey, making sure every adjustment you make fits perfectly and adds a personal touch to your creations. From tweaking a basic garment pattern to delving into more intricate modifications these tips will help ensure your sewing projects are as rewarding as they are successful. We always recommend testing your patterns by creating a muslin/toile in a cotton or cheaper fabric before cutting into your chosen fabric for the garment.

#### Helpful links:

This is a comprehensive list of instructions on how to alter a pattern. [namedclothing.com/pages/pattern-alterations](https://namedclothing.com/pages/pattern-alterations)

Cashmerette is a leading patternmaker who specializes in curvy sewing and fit. Find high quality tutorials on specific fit issues. [cashmerette.com/pages/common-fit-adjustments](https://cashmerette.com/pages/common-fit-adjustments)

This is a really great beginner pattern adjustment video (45mins). It covers myths about custom fit adjustments/ sewing; an introduction to custom fit adjustments; a common custom fit adjustments overview; how to know when you need an adjustment; and a grading and height adjusting demo. [youtube.com/watch?v=cBq8A59BE4s](https://youtube.com/watch?v=cBq8A59BE4s)

#### Books on how to adjust patterns (at your local library):

*How To Make Sewing Patterns*, by Donald H. McCunn.  
[kfpl.ca/c/catalogue/record/1.499881](https://kfpl.ca/c/catalogue/record/1.499881)

*The Vogue/Butterick Step-By-Step Guide To Sewing Techniques*. [kfpl.ca/c/catalogue/record/1.110670](https://kfpl.ca/c/catalogue/record/1.110670)

#### Other recommended books:

*Singer's The Perfect Fit*, Singer Sewing Reference Library.

*The Complete Photo Guide to Perfect Fitting*, by Sarah Veblen.

*Smart Fitting Solutions*, by Kenneth King.

*Fitting and Pattern Alteration*, by Elizabeth Liechty, Judith Rasband and Della Pottberg-Steineckert.

*Ahead of the Curve*, by Jenny Rushmore.

*Fit for Real People*, by Marta Alto, Pati Palmer and Barbara Weiland.